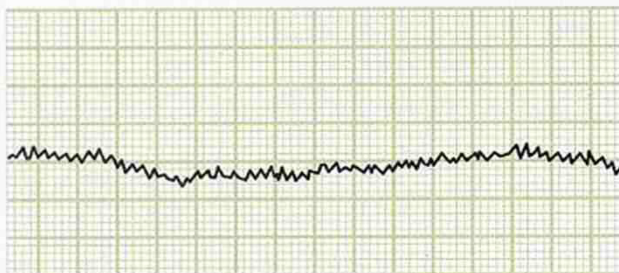




In recent years ink-jet printer performance become higher than higher. This high performance is realized by high precision printing head control. Porite high accuracy gears are using for these control components. The gear accuracy is 0 to 1 class on Tooth profile deviation, Helix deviation, and pitch & composite error deviations. We can produce more than 1 million gears in every month.



Tooth-to-tooth composite error deviation : 4μm  
Total composite error deviation : 8μm

**Product Sample**

Name	Motor pinion
Number	S15-124
Material	PFF01(SMF5030)
Treatment	Sizing
Module	0.4
Number of Teeth	46
Required accuracy	Tooth-to-tooth composite error 8 μm Total composite error 18 μm

◆ Low wear out material : PFF01F (compare to general materials) ◆

PFF01 was developed to prevent from wearing at mating gear.



**Material effects.**

- Uniform surface pore distribution.
- Good surface roughness.
- Good transferability from tooling.
- Sizing property is so good.
- High dimensional stability
- Suitable for very small gear (module:0.15~0.25)
- Tensile strength : 400~500N/mm  
(Enough strength to press-fit into the shaft)
- Capable to heat treatment.